

DIGITAL ARCHAEOLOGY NETWORK

LECTURE ANNOUNCEMENT

FINDING A MATCH

A Digital Comparison of Archaeological Pottery Drawings and Morphological Data

Daniele Zampierin (PhD candidate)

Free University of Berlin

This presentation will introduce a new methodology that has been developed specifically to compare morphological characteristics of ceramic artefacts with the aim of speeding the confrontation process. It offers the possibility of finding morphologically comparable ceramics from a large collection of archaeological drawings speeding up the morphological comparison step of the study. As a result, the researcher would be given a set of options that are morphologically comparable shortening the morphological study and, at the same time, giving a limited set of options to use for the fabric comparison study.

DETAILS

Date/Time: January 31st 2024, 5 pm

Location: Freie Universität Berlin, Hittorfstraße 18, 14195 Berlin, Room 010

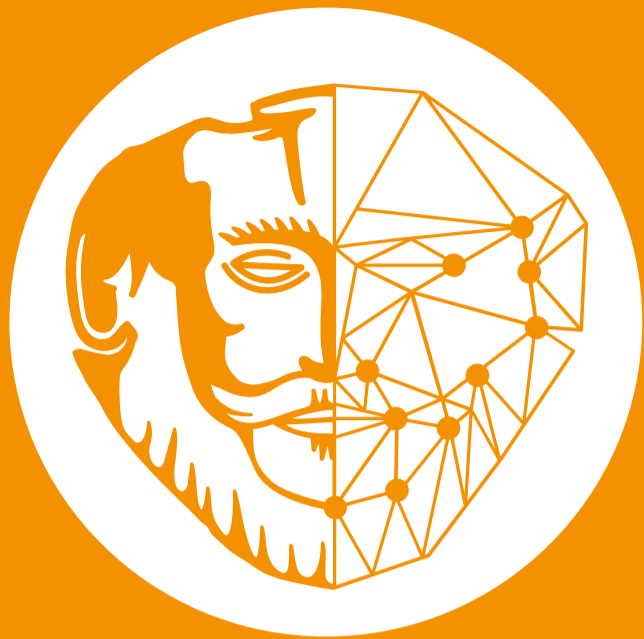
CONTACT

digital.archaeology@berliner-antike-kolleg.org

www.berliner-antike-kolleg.org/digital_archaeology

Subscribe to our mailing list for regular updates on upcoming topics and events!





DIGITAL ARCHAEOLOGY NETWORK

ABSTRACT: FINDING A MATCH

A Digital Comparison of Archaeological Pottery Drawings and Morphological Data

From the 3rd century BCE onwards, the Indian Ocean, in particular its Western half, has been the stage for the development of a large trade network connecting two different continents and countless different cultures. Despite being the topic of an ever-growing interest from the international archaeological and historical community, the study of the Indian Ocean trade network is still extremely fragmented, isolated and far from a comprehensive understanding of its original dynamics. Among the multiple difficulties that a researcher faces when investigating such complex trade network, identifying the provenance of archaeological material is one of the most meaningful and complex. To do so, the approaches can be two: material comparison and morphological comparison. However, in order to develop a substantial understanding of the trade system and of the main trade directions, the researcher should try to combine both the material and the morphological aspects. To do so, the researcher would have to study and compare an enormous amount of data resulting from published excavations catalogues and new excavation reports. This presentation aims to introduce you to the potentialities and the drawbacks of processing and comparing archaeological data digitally. In particular, the presentation will introduce a new methodology that has been developed specifically to compare morphological characteristics of ceramic artefacts with the aim of speeding the confrontation process. Such methodology offers the possibility of finding morphologically comparable ceramics from a large collection of archaeological drawings speeding up the morphological comparison step of the study. As a result, the researcher would be given a set of options that are morphologically comparable shortening the morphological study and, at the same time, giving a limited set of options to use for the fabric comparison study.

Daniele Zampierin (PhD candidate)

Free University of Berlin

daniele.zampierin@hotmail.com





DIGITAL ARCHAEOLOGY NETWORK

WEBEX

Meeting-Link:

<https://fu-berlin.webex.com/fu-berlin/j.php?MTID=mcb605db515159a65df7daa4c2392c3b4>

Meeting-Kennnummer:

2789 947 8038

Meeting-Passwort:

SRuwmqG7H66

Über Video oder Anwendung beitreten

Einwahl 27899478038@fu-berlin.webex.com

Sie können auch 62.109.219.4 wählen und Ihre Meeting-Kennnummer eingeben.

Per Telefon beitreten

+49-619-6781-9736 Germany Toll

+49-89-95467578 Germany Toll 2

Zugriffscod: 27899478038

Globale Einwahlnummern

<https://fu-berlin.webex.com/fu-berlin/globalcallin.php?MTID=m0d6d500316f14fd6ff1d0ce9a05206c9>

